

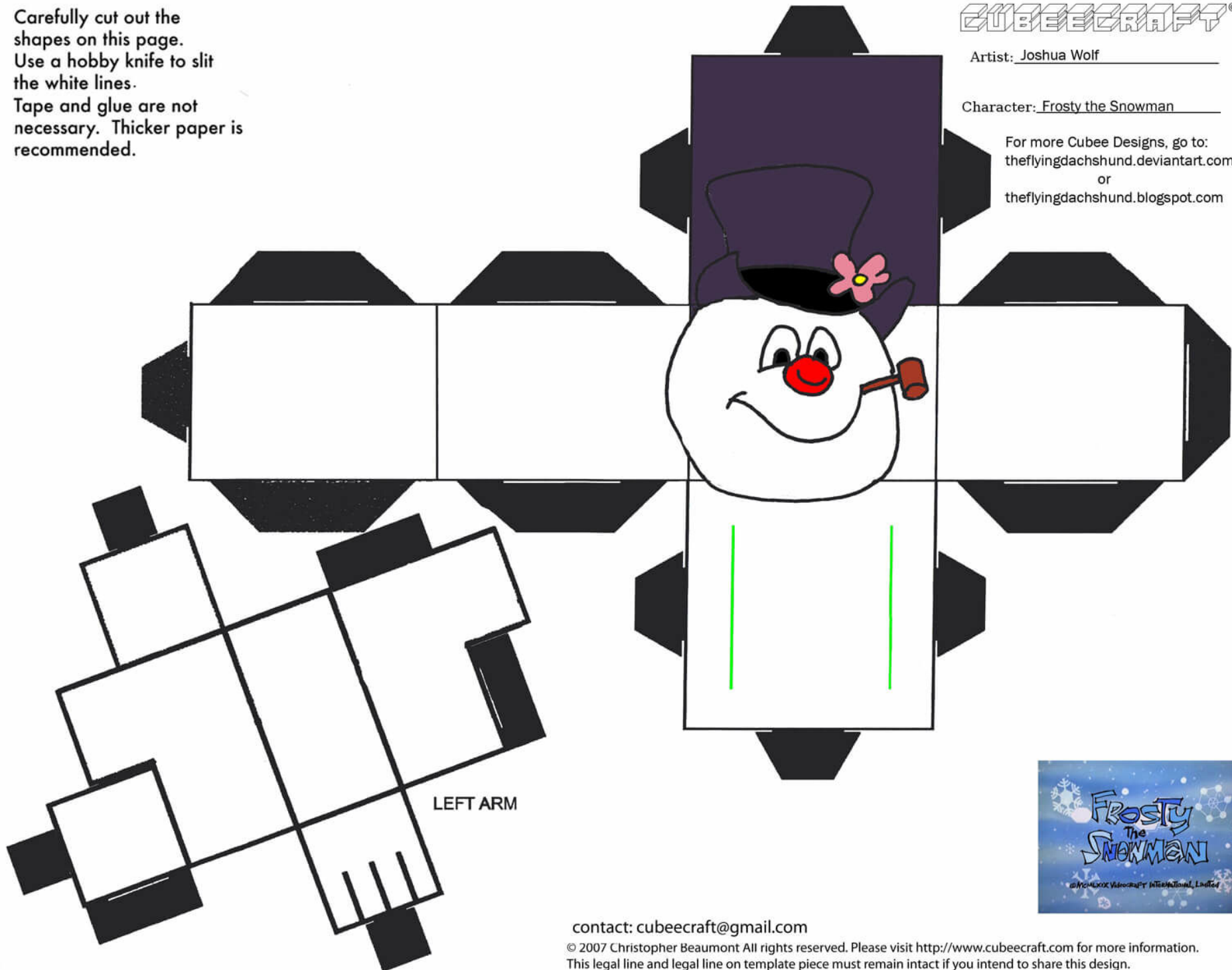
Carefully cut out the shapes on this page.  
Use a hobby knife to slit the white lines.  
Tape and glue are not necessary. Thicker paper is recommended.

CUBEECRAFT®

Artist: Joshua Wolf

Character: Frosty the Snowman

For more Cubee Designs, go to:  
[theflyingdachshund.deviantart.com](http://theflyingdachshund.deviantart.com)  
or  
[theflyingdachshund.blogspot.com](http://theflyingdachshund.blogspot.com)



contact: [cubecraft@gmail.com](mailto:cubecraft@gmail.com)

© 2007 Christopher Beaumont All rights reserved. Please visit <http://www.cubecraft.com> for more information.  
This legal line and legal line on template piece must remain intact if you intend to share this design.

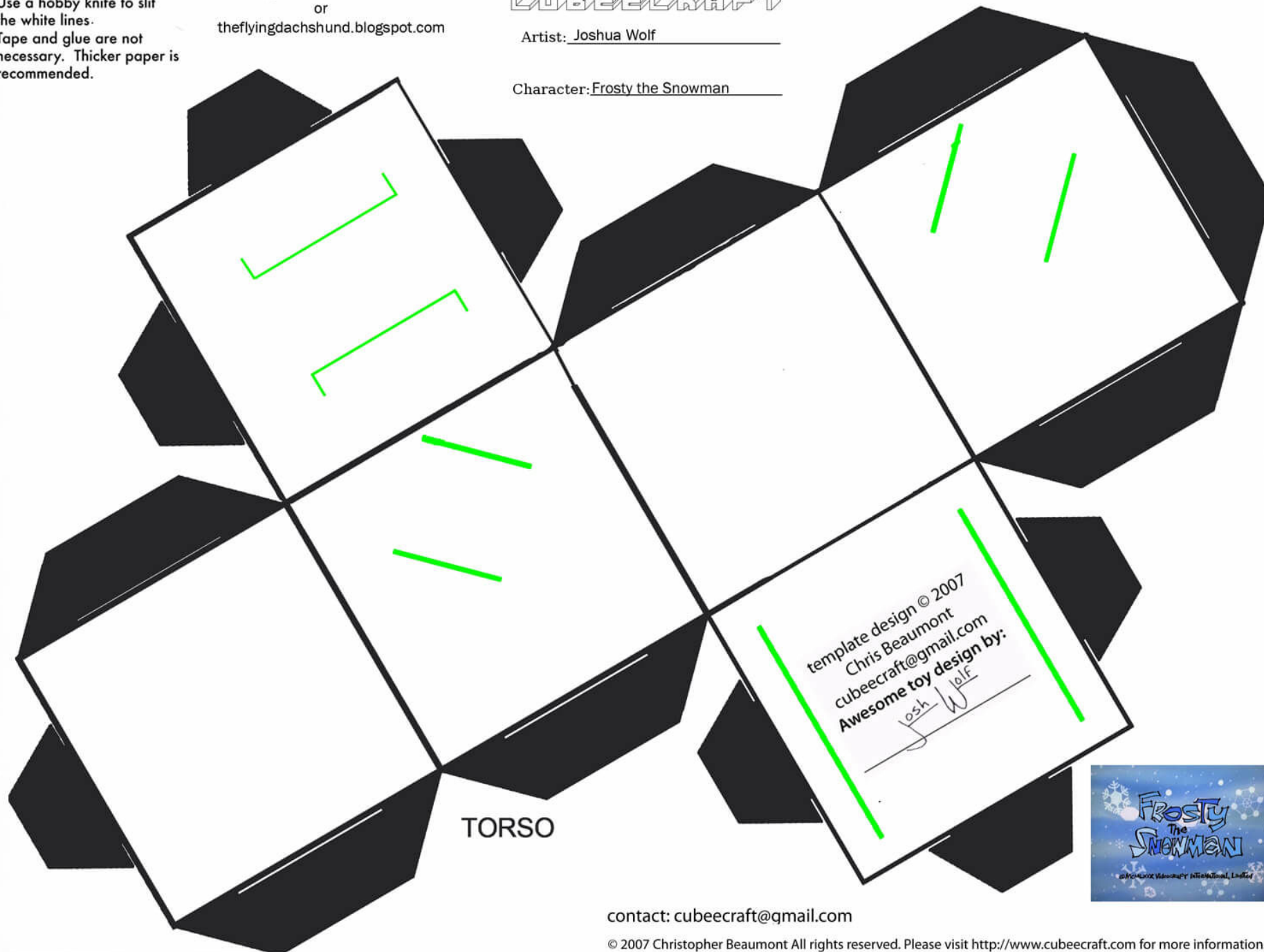
Carefully cut out the shapes on this page. Use a hobby knife to slit the white lines. Tape and glue are not necessary. Thicker paper is recommended.

For more Cubee Designs, go to:  
[theflyingdachshund.deviantart.com](http://theflyingdachshund.deviantart.com)  
or  
[theflyingdachshund.blogspot.com](http://theflyingdachshund.blogspot.com)

CUBEECRAFT®

Artist: Joshua Wolf

Character: Frosty the Snowman



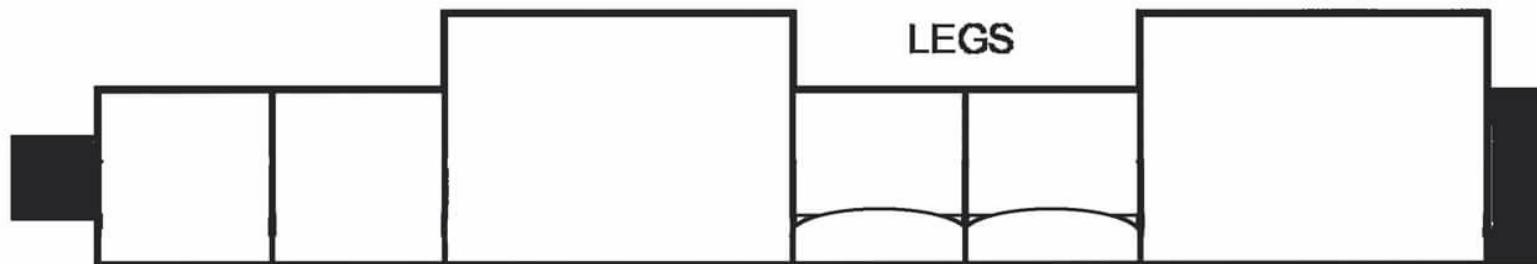
template design © 2007  
Chris Beaumont  
[cubecraft@gmail.com](mailto:cubecraft@gmail.com)  
Awesome toy design by:  
Josh Wolf

TORSO



contact: [cubecraft@gmail.com](mailto:cubecraft@gmail.com)

© 2007 Christopher Beaumont All rights reserved. Please visit <http://www.cubecraft.com> for more information. This legal line and legal line on template piece must remain intact if you intend to share this design.

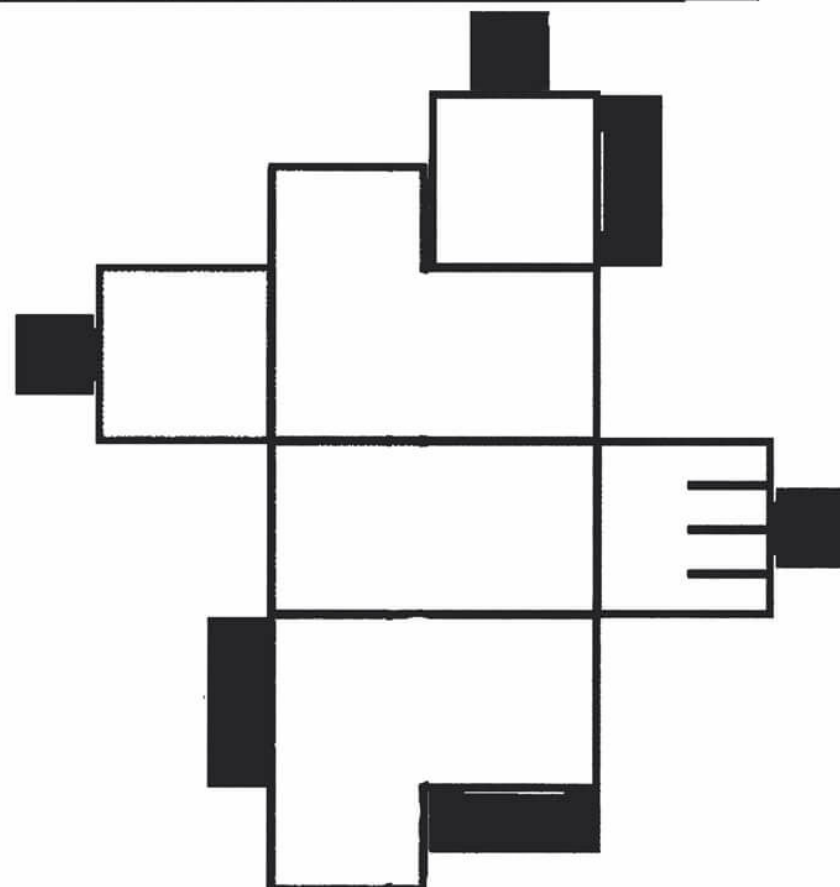


**CUBEECRAFT®**

Artist: Joshua Wolf

Character: Frosty the Snowman

Carefully cut out the shapes on this page.  
Use a hobby knife to slit the white lines.  
Tape and glue are not necessary. Thicker paper is recommended.



For more Cubee Designs, go to:  
[theflyingdachshund.deviantart.com](http://theflyingdachshund.deviantart.com)  
or  
[theflyingdachshund.blogspot.com](http://theflyingdachshund.blogspot.com)

contact: [cubecraft@gmail.com](mailto:cubecraft@gmail.com)

© 2007 Christopher Beaumont All rights reserved. Please visit <http://www.cubecraft.com> for more information.  
This legal line and legal line on template piece must remain intact if you intend to share this design.