

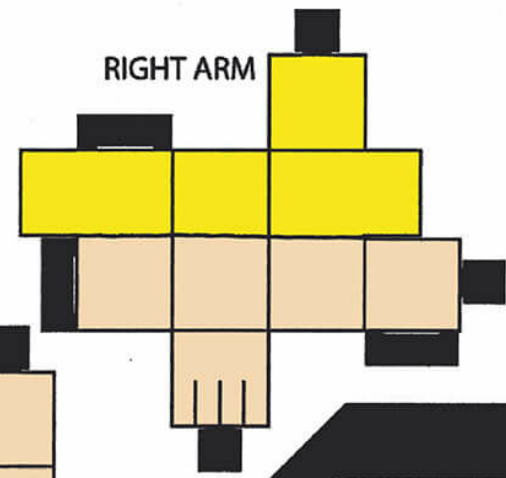
Artist: Joshua Wolf

Character: Drizella Tremaine

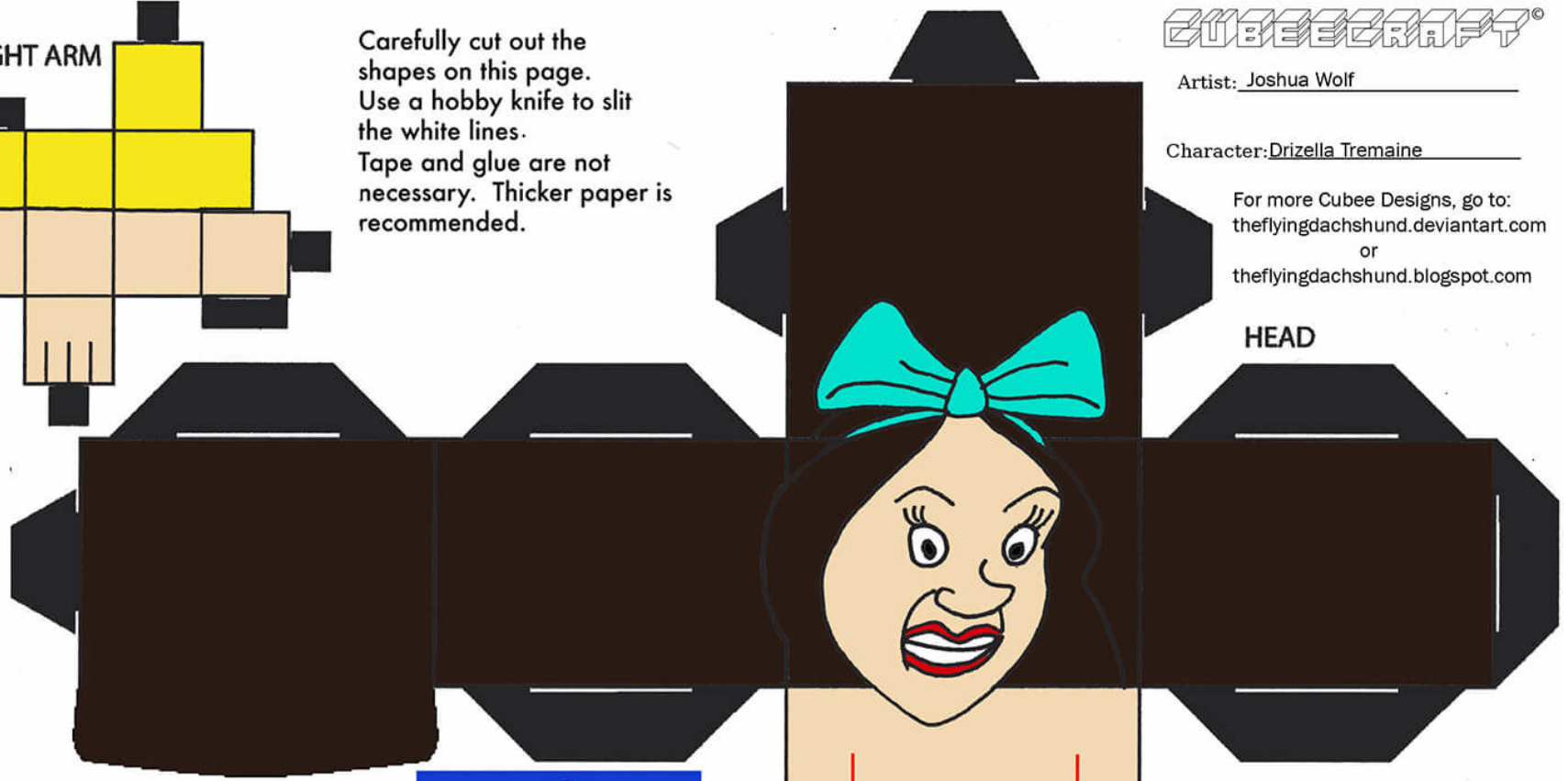
For more Cubee Designs, go to:
theflyingdachshund.deviantart.com
or
theflyingdachshund.blogspot.com

Carefully cut out the shapes on this page.
Use a hobby knife to slit the white lines.
Tape and glue are not necessary. Thicker paper is recommended.

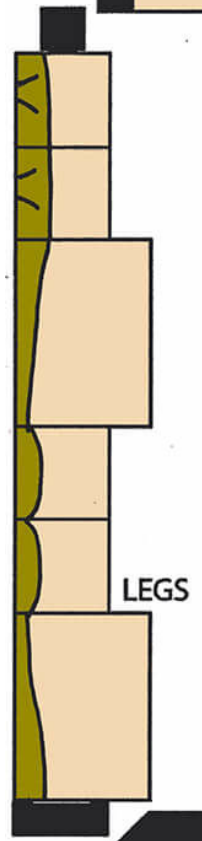
RIGHT ARM



HEAD

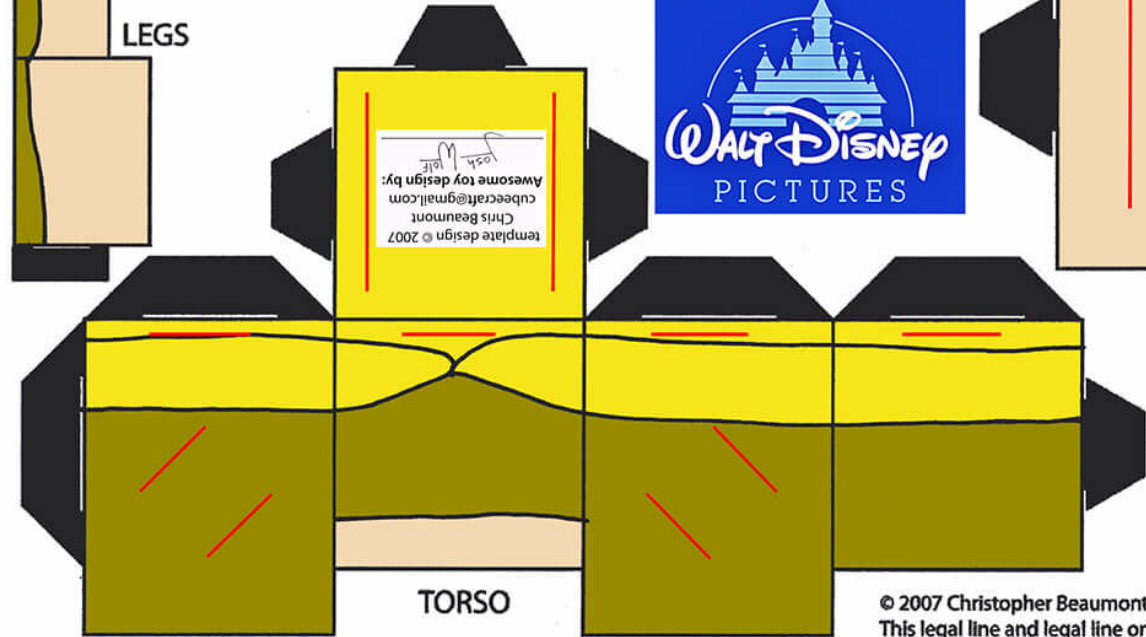


LEGS

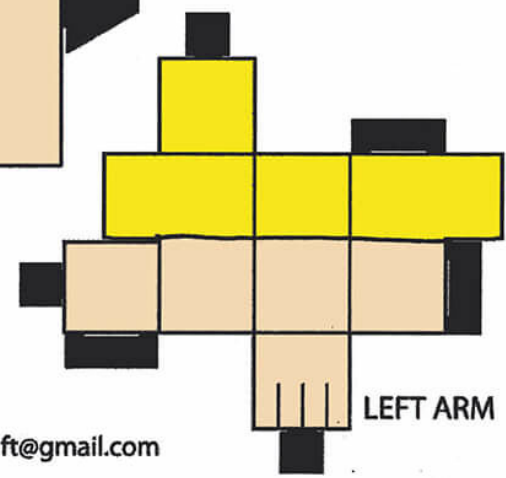


template design © 2007
Chris Beaumont
cubecraft@gmail.com
Awesome toy design by:
Josh Wolf

TORSO



LEFT ARM



contact: cubecraft@gmail.com

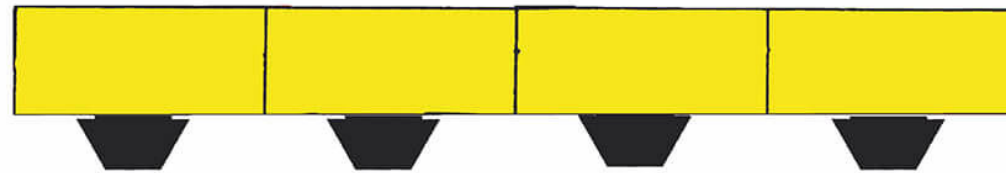
Carefully cut out the shapes on this page.
Use a hobby knife to slit the white lines.
Tape and glue are not necessary. Thicker paper is recommended.



Artist: Joshua Wolf

Character: Drizella Tremaine

For more Cubee Designs, go to:
theflyingdachshund.deviantart.com
or
theflyingdachshund.blogspot.com



contact: cubecraft@gmail.com

© 2007 Christopher Beaumont All rights reserved. Please visit <http://www.cubecraft.com> for more information.
This legal line and legal line on template piece must remain intact if you intend to share this design.