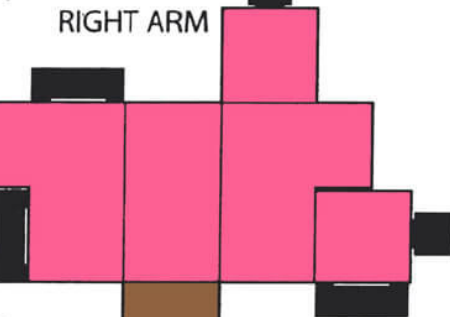
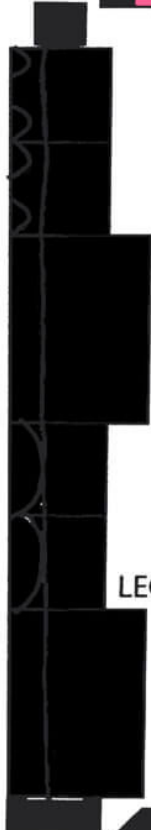


Carefully cut out the
shapes on this page.
Use a hobby knife to slit
the white lines.
Tape and glue are not
necessary. Thicker paper is
recommended.

RIGHT ARM



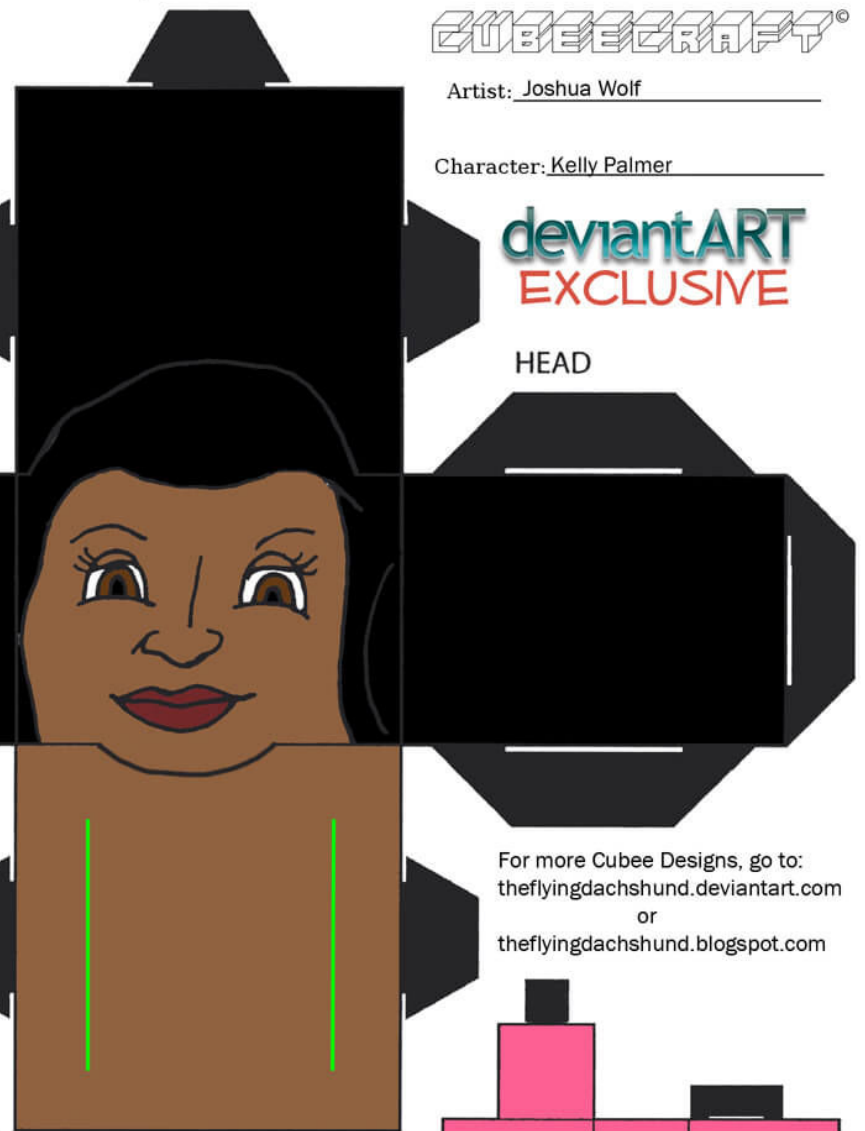
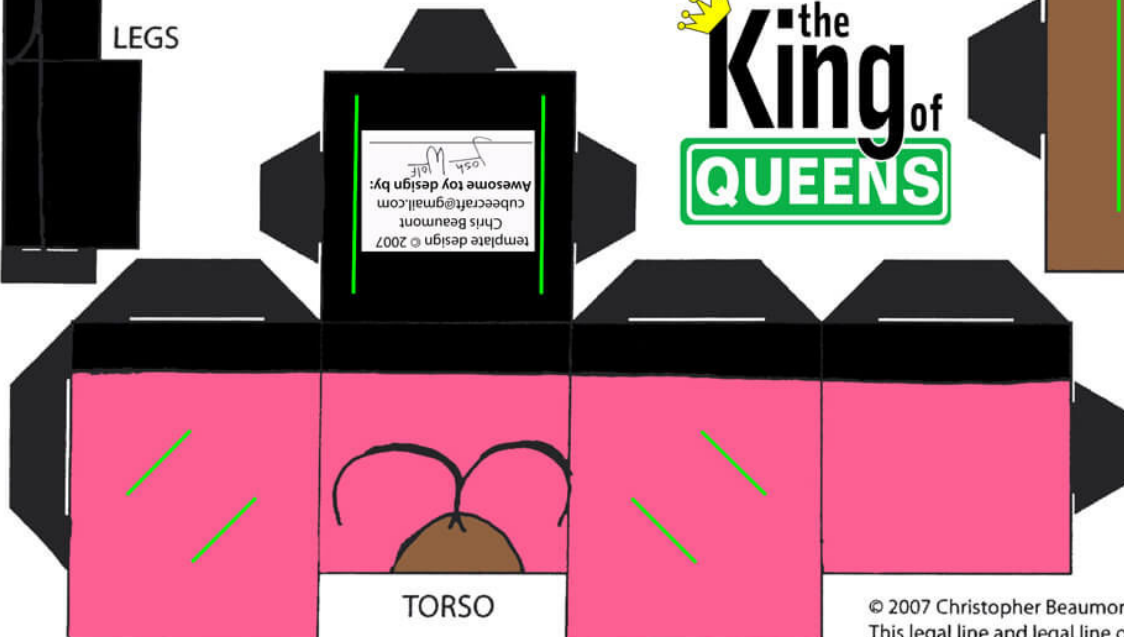
LEGS



the
King of
QUEENS

template design © 2007
Chris Beaumont
cubecraft@gmail.com
Awesome toy design by:
Josh Wolf

TORSO



LEFT ARM

